

A photograph of a modern, multi-level house at dusk. The house features white walls, large windows, and a prominent wooden ceiling on an upper level. A set of stone steps leads up to the entrance, and a small tree is planted in a planter box. The sky is a deep blue with some clouds.

Valmadre

HOMES

JOURNEY TO SUSTAINABILITY

DESIGN


IN HOUSE CUSTOM
DESIGN SERVICE

CONSTRUCT

UNCOMPROMISING
QUALITY &
STANDARDS

SUSTAINABILITY

SOLAR PASSIVE &
SUSTAINABLE
PRINCIPLES ARE THE
ESSENCE OF OUR
APPROACH



VALMADRE... PASSIONATE ABOUT SUSTAINABLE DESIGN

Valmadre is a highly awarded Dunsborough builder and designer creating beautiful [energy-efficient houses](#) across the Perth Metro & South-West region of Western Australia.

If you are seeking a quality [new home](#), [renovation](#), [investment property](#) or superb [luxury residence](#), Dunsborough builder Mike Valmadre and his team will take care of you.

It's our aim—to share our passion for innovative building and to ensure our clients enjoy the journey to [sustainability](#).

"Valmadre's attention to detail and their willingness to embrace different concepts ensured I ended up with a very liveable home that met my expectations and also achieves the environmental outcomes that were planned."

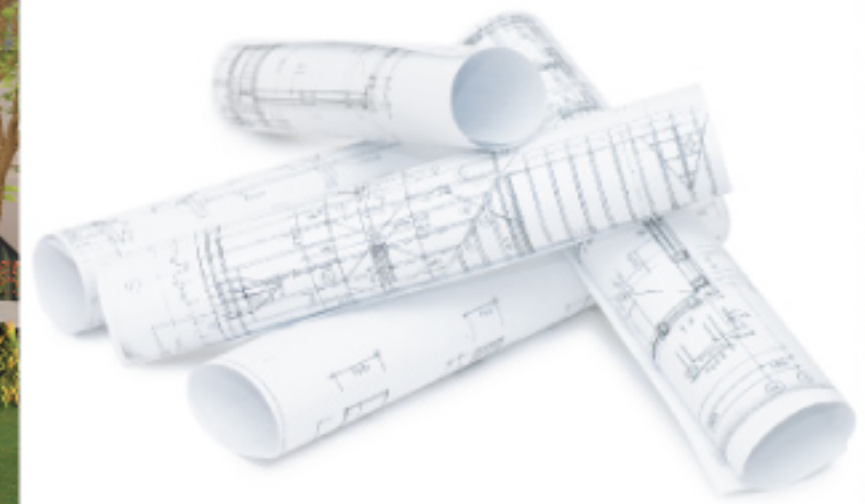
- Home Owner



01.
CONCEPT SKETCH PLANS
exploring the spacial arragemnets...



02.
3D MODELLING
ensuring we get the "look" right...



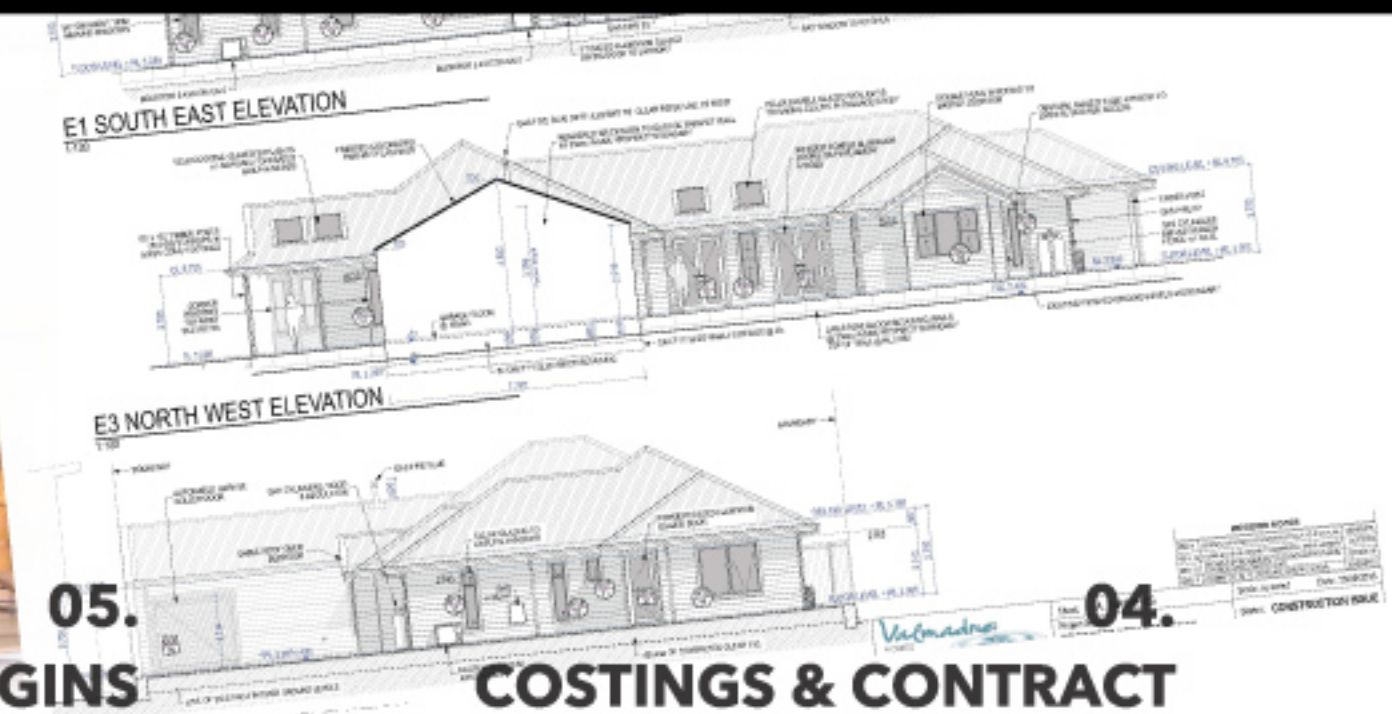
03.
DETAILED DRAWINGS
preliminary budget estimate so
there is no nasty surprises



YOUR CUSTOM - BUILD JOURNEY



05.
WE'RE ON SITE AND CONSTRUCTION BEGINS
we're sure you've enjoyed your journey with us this far -
now you're on your way to realising your dream...



04.
COSTINGS & CONTRACT
detailed transparent quote - fixed
price or cost-plus contract - it's
your choice



to start a conversation about your custom build journey [contact us here...](#)



IN - HOUSE DESIGN

Working closely with our in-house design professionals, we guarantee you will enjoy the process of bringing your dreams and ideas to fruition...



for more information see our website @ www.valmadre.net.au/design-studio/

Our strong held beliefs around sustainable building practices, minimising our carbon footprint, delivering cleverly designed solar passive homes, is our commitment to the planet.

All of this AND delivering an enjoyable & rewarding building experience is our commitment to YOU.

SUSTAINABLE HOMES



SITE EVALUATION & ORIENTATION

- ✓ Visit Site
- ✓ Understand site challenges
- ✓ Factor in views & prevailing weather patterns
- ✓ Optimise Northern orientation



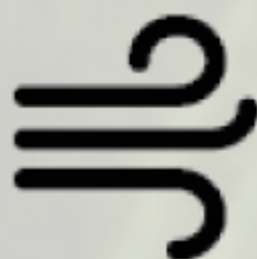
DESIGN FOR COMFORT

- ✓ Shade design and overhangs - Summer sun out
- ✓ Passive solar heat gain - Winter sun in
- ✓ Design layouts are site specific



STRATEGIC THERMAL MASS

- ✓ Maximise internal thermal mass
- ✓ Minimise external thermal mass
- ✓ Thermal mass in concrete floors
- ✓ Thermal mass in feature solid walls



VENTILATION

- ✓ Seal homes against air leaks
- ✓ Breezeway corridors for crossflow ventilation
- ✓ Openings designed to capture cooling breezes
- ✓ Ceiling fans for air movement



EARTH FRIENDLY BUILDING

- ✓ Locally harvested Timber Frame construction
- ✓ Keeping it simple = reduced cost to the planet
- ✓ Energy efficient and water wise fixtures and fittings
- ✓ Low VOC materials



BEING KIND TO OUR PLANET

- ✓ Reduce and recycle building waste
- ✓ Free energy from the sun
- ✓ Low embodied energy construction
- ✓ Reduce ongoing energy consumption





GALLERY



Valmadre

HOMES

FOLLOW OUR JOURNEY / CONTACT

www.valmadre.net.au

info@valmadre.net.au

+61 8 9756 7308 (Office Hours)

0427 567 794 (After Hours)



facebook.com/valmadreconstructions/



[instagram/valmadreliving](https://instagram.com/valmadreliving)